

# TARGA 48<sup>GT</sup>

Spontaneous adventures  
made possible by the Targa 48 GT



Every. Perfect. Detail.







# Discover what's round the next bay in style

The seas are beckoning, the wine is chilled and everyone's on board. The exceptional engineering of the Targa 48 GT means you can go further, explore more and extend your stay with ease.

Combining the luxury of a spacious, sociable upper deck with a well-appointed helm station and twin seats, the Targa 48 GT enables you to share the thrill of discovery in comfort. Add to that the new signature Alberto Mancini-designed windows, which sweep

across its hull, and you have a craft that exudes as much style as it does performance and power.

Then, let's not forget all the new technologies come as standard. Such as the electric, hard-top roof, coupled with panelled glazing. With one elegant sweep, the Targa 48 GT lets sunlight flood in, whilst its powerful IPS engines deliver an agile performance that responds to the thrill of the journey ahead – wherever it may take you.







# Share the experience, comfortably

The Targa 48 GT has perfectly thought-through features, such as a J-shaped seating in the cockpit, with the option to specify a teak table that converts to a sunpad. Perfect for complete open-to-the-skies living and stylish entertaining, day or night.

- **Electric retractable glazed roof with one-touch operation and pneumatic seal**
- **Enclosed fully-furnished upper saloon**
- **Large mid-master cabin with en suite and separate shower compartment**
- **Sofa convertible to third berth in master cabin option**
- **Companion seating area opposite helm**
- **Opening windows to saloon**
- **V-berth forward guest cabin**
- **Full-height fridge/freezer**

#### **Optional equipment highlights:**

- Single crew cabin
- Third cabin in lieu of lower saloon
- Submersible bathing platform
- Gyroscopic stabiliser
- A choice of powerful engines:
  - 2 x Volvo Penta IPS600 D6-435, diesel with 435mhp each and a maximum speed of 30 knots
  - 2 x Volvo Penta IPS700 D8-550, diesel with 550mhp each and an estimated maximum speed of 32 knots



















# The inside is an adventure too

In the spirit of building the perfect yacht at every possible level, we have also carefully created four different interior design schemes for you to choose from:



## AMALFI

Inspired by Liguria's local architecture, this scheme exudes the sunny warmth synonymous with fragrant Italian lemon trees and the umbrella-lined shores of the Amalfi coast.



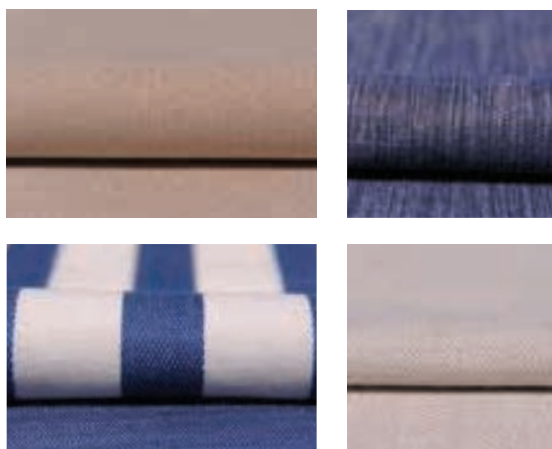
## CAPRI

Understated, earthy colours, effortlessly combined with rich natural textures. All the hallmarks of an interior design collection that is as gentle as the Mediterranean breeze.



## HAMPTONS

Evoking elegant vintage design cues, whilst offering a bold and contemporary interpretation of the luxury that was once the preserve of America's East Coast.



## ST. TROPEZ

An ode to the sea where all manner of deep, oceanic blues tastefully swirl with muted greys, delicate creams and classic nautical motifs.

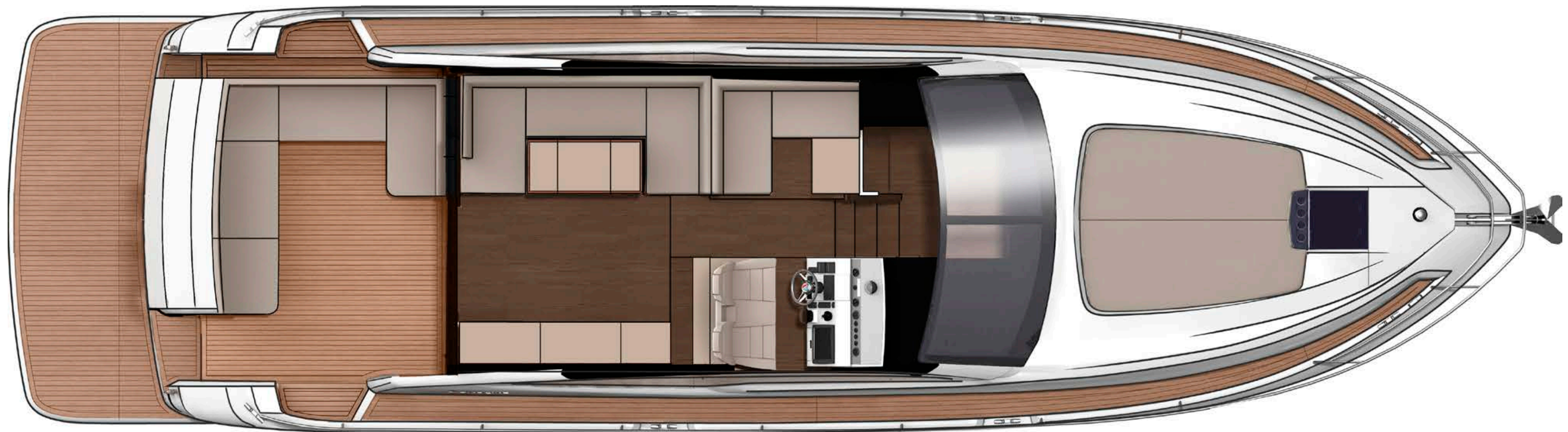




## More space and capacity

- Length overall (inc. pulpit) fixed platform: 49'2" (15.0m)
- Length overall (exc. pulpit) fixed platform: 48'6" (14.8m)
- Length overall (inc. pulpit) submersible platform: 51'4" (15.64m)
- Length overall (exc. pulpit) submersible platform: 50'8" (15.44m)
- Beam (inc. gunwale): 14'2" (4.32m)
- Number of berths: 4 – 7
- Draught: 3'10" (1.18m) unloaded
- Height above waterline (inc. arch & nav. light mast): 15'1" (4.6m)
- Transport height: 15'10" (4.83m)
- Dry weight (approx.): 13.28 imp. tons / 14.88 US tons (13,500kg)
- Fuel capacity: 288 gallons / 346 US gallons (1,309 litres)
- Water capacity (inc. calorifier): 106 gallons / 127 US gallons (482 litres)

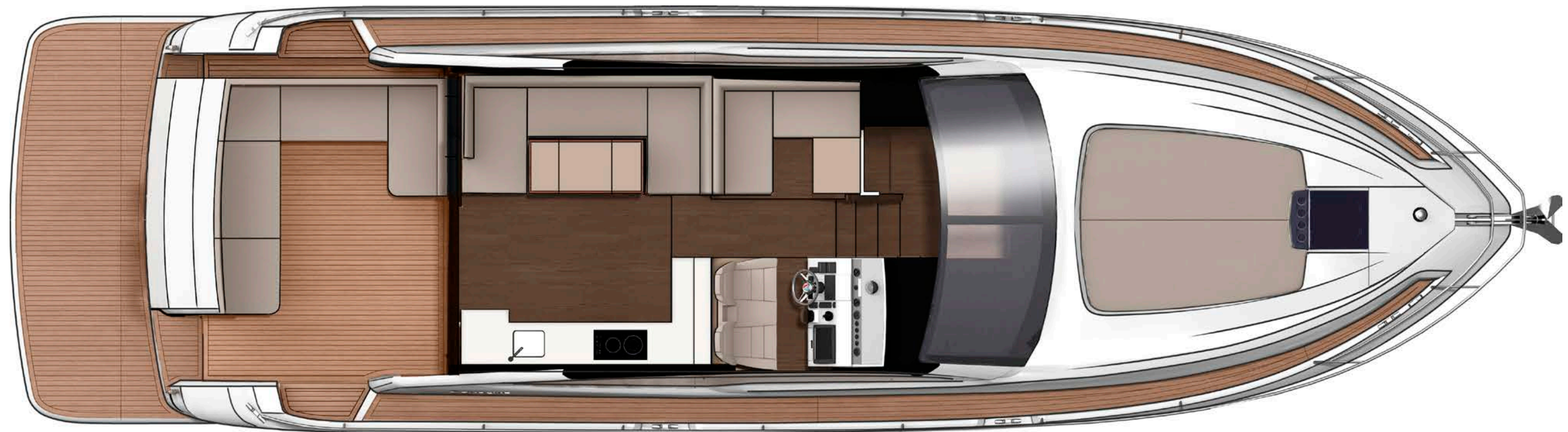




## Main Deck

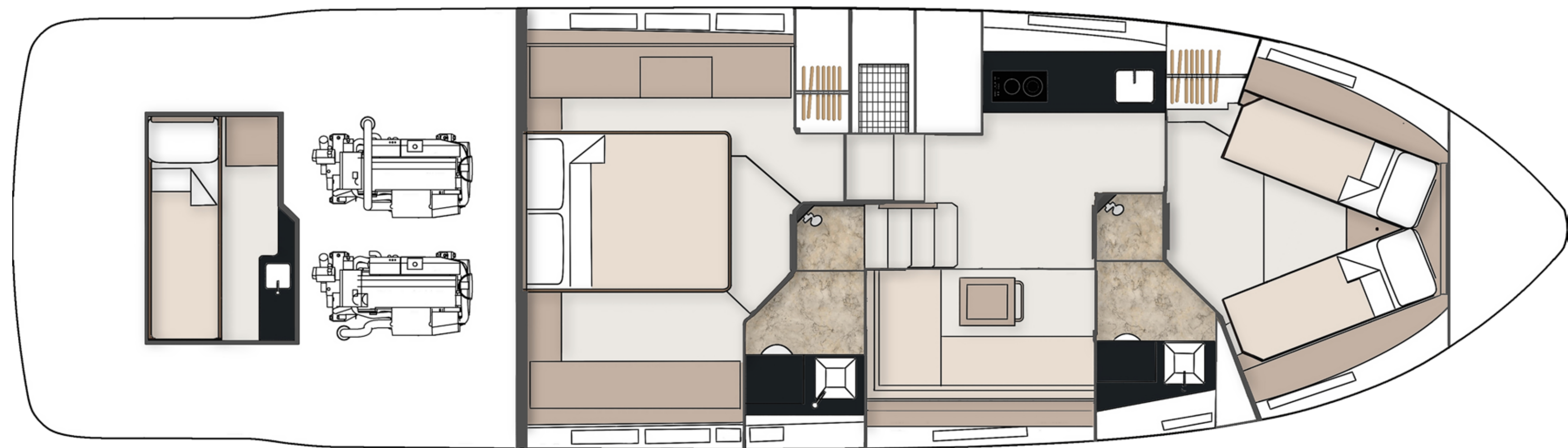
With its hard-top sun roof and luxurious seating, the Targa 48 GT offers bright, light and companionable space.





## Main Deck – Galley Up

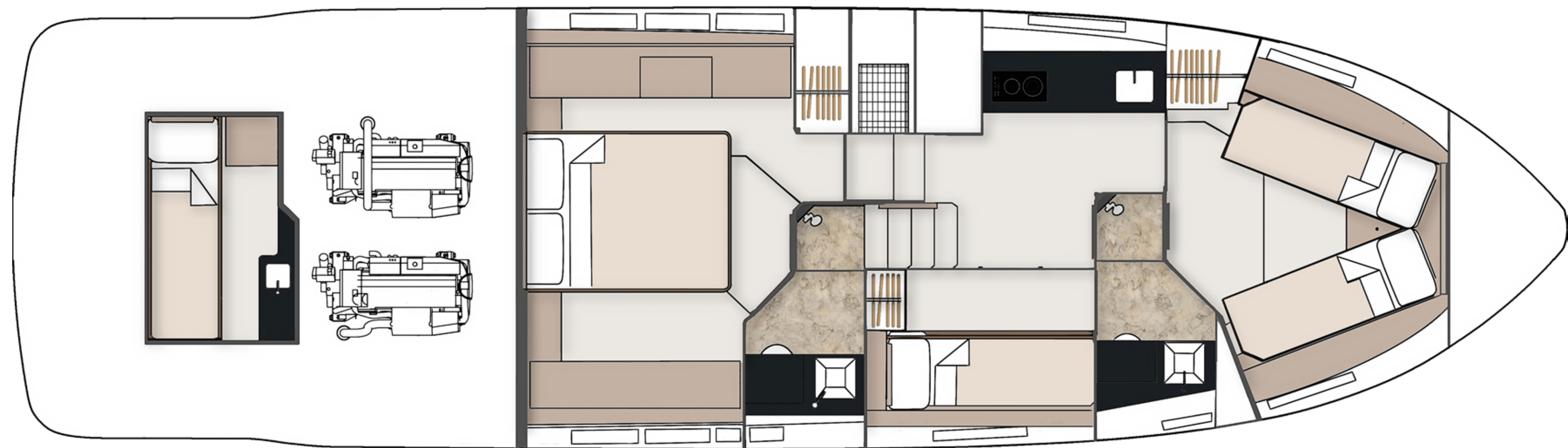




## Lower Deck – 2 Cabin

The lower deck is spacious enough to suit you and your guests needs.





## Lower Deck – 3 Cabin



# Finally, everything else that goes into making the perfect yacht...

## DECK

Anchor chain locker  
Anchor winch controls  
Anchor winch (electric)  
Calibrated anchor chain  
Ensign & staff  
Fender set  
Full set of IMCO navigation lights  
Hot & cold water transom shower  
Moulded non-slip deck surface  
Recessed self-draining area on foredeck for coach-roof cushions  
Riding light  
Rubbing strake  
Self-stowing Delta® anchor  
Stainless steel bow fairlead  
Stainless steel bow, spring & stern cleats  
Stainless steel handrails  
Stainless steel pulpit  
Stainless steel stemhead roller  
Stainless steel transom wing cleats  
Swim ladder to bathing platform  
Teak-laid bathing platform (with option of submersible platform)  
Toughened glass curved windscreen  
Transom gate from cockpit to integral bathing platform  
Twin horns  
Water filler  
Windscreen washers  
Windscreen wipers

## HELM POSITION

12V socket  
Bilge pump switches with integral operating warning lights & audible alarms  
Twin helm seat  
Controls for engine bay fire extinguisher system  
Drinks holders  
Electronic single-lever throttle & gear controls for port & starboard engines  
Fuel gauges  
Full engine instrumentation including; tachometers, temperature gauges, audible alarms & engine hour meters  
Garmin GMI 20 digital multi-function instrument system with colour display  
Garmin VHF marine radio  
Helm position indicator  
High-speed magnetic compass  
IPS joystick  
Remote anchor winch controls  
Searchlight with remote control at helm  
Waterproof switches for navigation & riding lights, windscreen wipers & engine bay extractor fans

## ELECTRICAL SYSTEMS

All 240V, 24V & 12V circuits (where applicable) protected by circuit breakers with main electrical load control panel  
Electrical sockets  
Heavy duty circuit breakers  
Isolating switches to all batteries

## 12 Volt

Batteries – 2 x heavy duty batteries for domestic services  
1 x heavy duty battery for exclusive port engine starting  
1 x heavy duty battery for exclusive starboard engine starting  
Emergency battery coupling system permits starboard engine to start port engine if domestic batteries accidentally discharged

## 240 Volt

Polarity check & earth leakage protection system  
Power points throughout the boat fed from shore power or generator  
Regulated battery charger  
Shore power supply

## COCKPIT

12V heavy duty weatherproof socket  
Bathing platform lights  
Boat hook  
Central dining area with table  
Drinks holders  
Engine bay access hatch  
Fender stowage  
Gas locker  
Lazarette under cockpit seat  
Life raft stowage  
Manual bilge pumps  
Mooring warps  
Step for side deck access  
Teak laid cockpit  
Warp lockers

## INTERIOR FURNISHINGS

Choice of interior finishes from the Amalfi, Capri, Hamptons or St Tropez interior styling ranges selected by the Fairline Interior Design Team

## HULLFORM AND CONSTRUCTION

Antifouling protection to hull  
Design, layout & detailing by the Fairline design team  
Full length moulded spray deflectors  
Hardtop with electric sliding roof  
Integrally moulded engine bearers  
Polyurethane foam cores throughout deck for strength & thermal insulation  
Transverse & longitudinal strengthening stringers throughout hull

## MAIN SALOON

Companion seating opposite helm  
Companionway steps with handrail to galley & accommodation  
Dining table  
LED ceiling lights  
32" LCD television  
Manual opening windows  
Radio with wireless connectivity  
Side board with storage for bottles & glasses  
Sofa  
Stainless steel door to cockpit with integral blind system  
Storage locker to helm seat base  
Stowage locker under seating



**GALLEY**

Control panel for 12V/240V domestic electrical circuits  
Crockery stowage  
Extractor fan  
Fire extinguisher  
Foundations® work surface with covers  
Hob, oven & grill  
Hull window  
Integrated waste bin  
Lacquered cupboard doors  
LED ceiling lights  
Lockers (overhead)  
Sink with hot & cold mixer tap  
Tall fridge/freezer with automatic 12V/240V change-over  
Work surface lights

**LOWER SALOON**

Access to day head  
Aerial & connections for television  
Cocktail table converts to dining table  
Companionway timber steps with handrail  
First aid kit  
Hull window  
LED ceiling lights  
22” LCD television  
Lockers (overhead)  
Radio & iPod dock with 2 speakers  
Sofa  
Stowage locker under dinette seating  
Underfloor stowage locker

**MASTER CABIN**

Access to en suite  
Bedside tables  
Chest of drawers  
Full length double bed  
Full length mirror  
LED ceiling lights  
Opening portholes  
Reading lights  
Vanity unit  
Wardrobe

**MASTER EN SUITE**

220V/240V shaving point  
Automatic shower tray pump-out system  
Electric silent-flush freshwater toilet  
Extractor fan  
Solid surface vanity unit locker & basin with hot & cold pressurised water  
Full set of bathroom fittings  
Full standing-height shower with integral shower tray & adaptable shower head  
Hand basin with hot & cold water  
Mirror  
Opening porthole  
Stowage locker

**FORWARD CABIN**

Access to shower/WC compartment  
Bedside tables  
Double bed converting to V-berth  
Full length mirror  
Hatch to foredeck  
Headboard shelf unit  
LED ceiling lights  
Lockers (overhead)  
Low level drawers  
Opening portholes  
Reading lights  
Trinket locker  
Wardrobe

**GUEST EN SUITE**

220V/240V shaving point  
Automatic shower tray pump-out system  
Electric silent-flush freshwater toilet  
Extractor fan  
Solid surface vanity unit locker & basin with hot & cold pressurised water  
Full set of bathroom fittings  
Full standing-height shower with integral shower tray & adaptable shower head  
Hand basin with hot & cold water  
Mirror  
Opening porthole  
Stowage locker

**THIRD CABIN**

(optional, in lieu of lower saloon)  
Full length mirror  
Full length twin bunk beds  
LED ceiling lights  
Opening porthole  
Reading lights  
Wardrobe

**CREW CABIN**

(optional)  
Single berth  
Sink  
Storage locker  
Toilet

**ENGINES & STERNGEAR**

Automatic bilge pumps for engine bay with a manual ‘on’ override  
Automatic engine bay fire extinguisher system  
Electric engine bay fans  
Electric trim tabs with cathodic protection  
Engine bay lights  
Engine room soundproofing  
High capacity emergency manual bilge pump system with changeover valves  
Sea cocks on all inlets/outlets below waterline

**FUEL SYSTEM**

Changeover valve system to permit each engine to draw fuel from & return fuel to either tank  
Emergency fuel shut-off valves  
High capacity water separators & fuel filters  
Individual fillers & vents to port & starboard  
Twin fuel tanks

**FRESHWATER SYSTEM**

Automatic, pressurised supply  
Calorifier hot water system  
Water tank

**USA SPECIFICATIONS**

(in addition to or in lieu of those listed above)  
Voltage - 2 x 110V (220V) 60Hz

Whilst every effort is made to keep all sales literature up to date, it should not be regarded as an infallible statement of current specifications and does not constitute an offer for the sale of any particular boat. We continually seek to improve the specification and design of our boats, so alterations and upgrades to specifications take place continually.

Appointed dealers are not agents of Fairline Yachts Ltd and are not authorised to commit Fairline Yachts Ltd by any express or implied undertaking or representation.

Performance Figures: Power quoted in our literature for diesel inboard engines is crankshaft output.

Performance Estimates: Performance estimates are given in good faith, but are in no way guaranteed for any particular model. Dirt on the bottom of the boat, damage to the propellers, engine tuning, external water and air temperatures, and the weight of the crew, fuel and water carried can all adversely affect performance. For those and other reasons we can give no performance guarantees.





# An unrivalled dealership network

Just like the many parts that make up one of our extraordinary yachts, so too are international dealers handpicked and perfectly placed to cover anything and everything you could want from Fairline (you can visit [fairline.com](https://www.fairline.com) for details of your nearest dealer).

Fairline Argentina  
 Fairline Benelux & W. Germany  
 Fairline Brazil  
 Fairline Cala d’Or  
 Fairline Channel Islands  
 Fairline Chertsey  
 Fairline Chesapeake  
 Fairline Colombia  
 Fairline Costa Blanca  
 Fairline Côte d’Azur  
 Fairline Croatia

Fairline Cyprus  
 Fairline Denmark  
 Fairline Eastbourne  
 Fairline Florida  
 Fairline Greece  
 Fairline Great Lakes  
 Fairline Hong Kong  
 Fairline Ibiza  
 Fairline India  
 Fairline Indonesia

Fairline Israel  
 Fairline Italia  
 Fairline Japan  
 Fairline Korea  
 Fairline Lebanon  
 Fairline Malta  
 Fairline Menorca  
 Fairline Mexico  
 Fairline Middle East  
 Fairline Monaco

Fairline New South Wales  
 Fairline New York  
 Fairline New Zealand  
 Fairline North Mallorca  
 Fairline Philippines  
 Fairline Poland  
 Fairline Portugal  
 Fairline Queensland  
 Fairline Russia  
 Fairline Singapore

Fairline South Africa  
 Fairline South Mallorca  
 Fairline Southampton  
 Fairline Sverige  
 Fairline Switzerland  
 Fairline Thailand  
 Fairline Turkey  
 Fairline Ukraine  
 Fairline Victoria  
 Fairline Western Australia



